

St Mary's Community Pre-School Casino Inc.

PO Box 388

57 NORTH STREET  
CASINO NSW 2470

Phone: 66621684

Email: [marytots@bigpond.com](mailto:marytots@bigpond.com)

Facebook: St Mary's Community Preschool Casino Inc.



## Newsletter April 30<sup>th</sup> 2020

### Enrolment During COVID -19

Hello to all our preschool families. We hope you are well and have been doing okay during the time with have all been practising physical and social distancing. It feels like a very long time since our preschool community has been together. However, working families have started to return to preschool and other families are slowly starting to return when they decide to do so. Please be assured your child's enrolment will be maintained and secure at preschool. This means that your child's enrolled placement of 2 days (15 hours) will not be offered to anyone else if your child is not attending preschool at the moment.



During the last few weeks of term 1 many families did not attend preschool unless families were needing to work and were unable to keep their child at home. We thank you for your cooperation and understanding during this time. Preschool is currently processing and adjusting fee statements for term 1 to provide a credit of 3 weeks fees (maximum) for families that were self- isolating at home or not attending preschool during the final weeks of term 1. Depending on your child's attendance during the last 3 weeks of term 1 fees will be adjusted accordingly. Fee statements will be sent out via email or will be placed in your child's bag to go home over the coming couple of weeks. If you do not receive an updated statement or wish to query your account please phone or email the preschool. If you have changed enrolment contact details such as email details please let us know so we can update your child's enrolment record.

### Fee Free Preschool During Term 2 and 3

As you will be aware preschools operating in NSW have been affected by COVID-19 due to significant reduction in enrolments. As a result, funding will be made available to community preschools to provide fee free preschool to local families.

This will maintain the viability of the community preschool sector and provide relief in cost of living pressures to NSW families by making community preschool free for children in NSW for up to six months (Terms 2 and 3).



## CHANGES TO DROP OFF/ COLLECTION PROCEDURE DUE TO COVID19



- Leave your child and their bag here
- An educator will assist with hand washing, belongings and signing in and out
- Observe social distancing
- Have a nice day!

## New Arrival and Departure Procedures

St Mary's Community Preschool strictly follows the recommendations of the Department of Health, Department of Education and our state government's directions, as we work to implement safety measures for your child to attend preschool.

Thank you for your support as preschool implements new procedures to provide a healthy, safe and supportive environment for all children and staff. In the interest of safety, we have limited adult entry into the preschool during drop off and collection of children. Upon arrival and departure, families are required to meet educators under the verandah, where we will assist your child with hand washing and putting belongings away. Preschool educators will also take responsibility for signing children in and out of preschool. Thank you for your ongoing support and understanding.

**If your child needs Panadol, they NEED to be at home.**

We are doing everything we can to continue to deliver quality preschool education and care.

Recommendations by the Australian Health Protection Principal Committee (AHPPC) advise risk mitigation measures should be in place for Early Childhood and Learning Centres as follows

- Exclusion of unwell staff, children and visitors.
- Reduced mixing of children by separating cohorts (including the staggering of meal and play times).
- Enhanced hygiene for children staff and parents
- Regular cleaning of high touch surfaces
- Washing of play items

## Immunisation Enrolment and Record Keeping Requirements

The Department of Education has primary responsibility for regulating the early childhood sector and is assisting NSW Health to ensure immunisation requirements are being met.

Preschool is required to maintain an immunisation register that records the up to date immunisation status of all enrolled children.

If your child has had their 4years vaccine (listed on the NSW Immunisation Schedule) and you have not provided an update of your child's immunisation status to preschool, please do this promptly. If you are unsure as to whether you have provided this, please check with Jenny.



## Facebook Page

Please like our Facebook page (if you have not done so already) as this is a great way to keep up to date with preschool happenings. Appropriate social media content according to the Preschool Social Media Policy will only be posted.

## KIDS IN THE KITCHEN:

Turn rice cakes, veggies and dip into funny faces with your kids!



## Helpline for families to find care during COVID-19 now available

On behalf of the Department of Education, Skills and Employment, the Australian Children's Education and Care Quality Authority (ACECQA) is delivering a national toll-free helpline to assist parents and carers to find an early childhood education and care service during the COVID-19 pandemic.

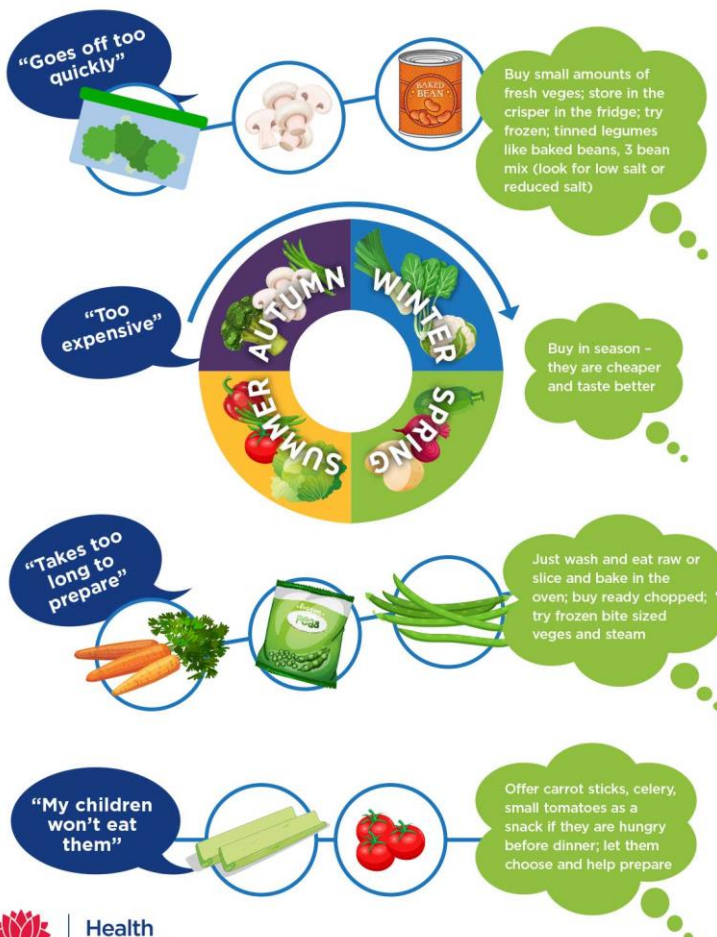
The helpline contact number is 1800 291 041 and it operates 9am to 5pm (AEST), Monday – Friday (excluding public holidays).

Families, including essential workers and those with vulnerable children, can also search for early childhood education and child care services online using [StartingBlocks.gov.au Find Child Care](https://StartingBlocks.gov.au) or [Child Care Finder](#).

More information about the toll free helpline is available on the [StartingBlocks.gov.au](https://StartingBlocks.gov.au) and [ACECQA](https://ACECQA.gov.au) websites.

Thank you  
Jenny Du Frocq  
Director

## What's stopping your 5 veges a day?



5 SERVES OF VEGGIES  
60 MINUTES OF PHYSICAL ACTIVITY  
2 SERVES OF FRUIT  
+ WATER AS A DRINK



KEEPS CHILDREN HEALTHY!



Illawarra Shoalhaven Local Health District